

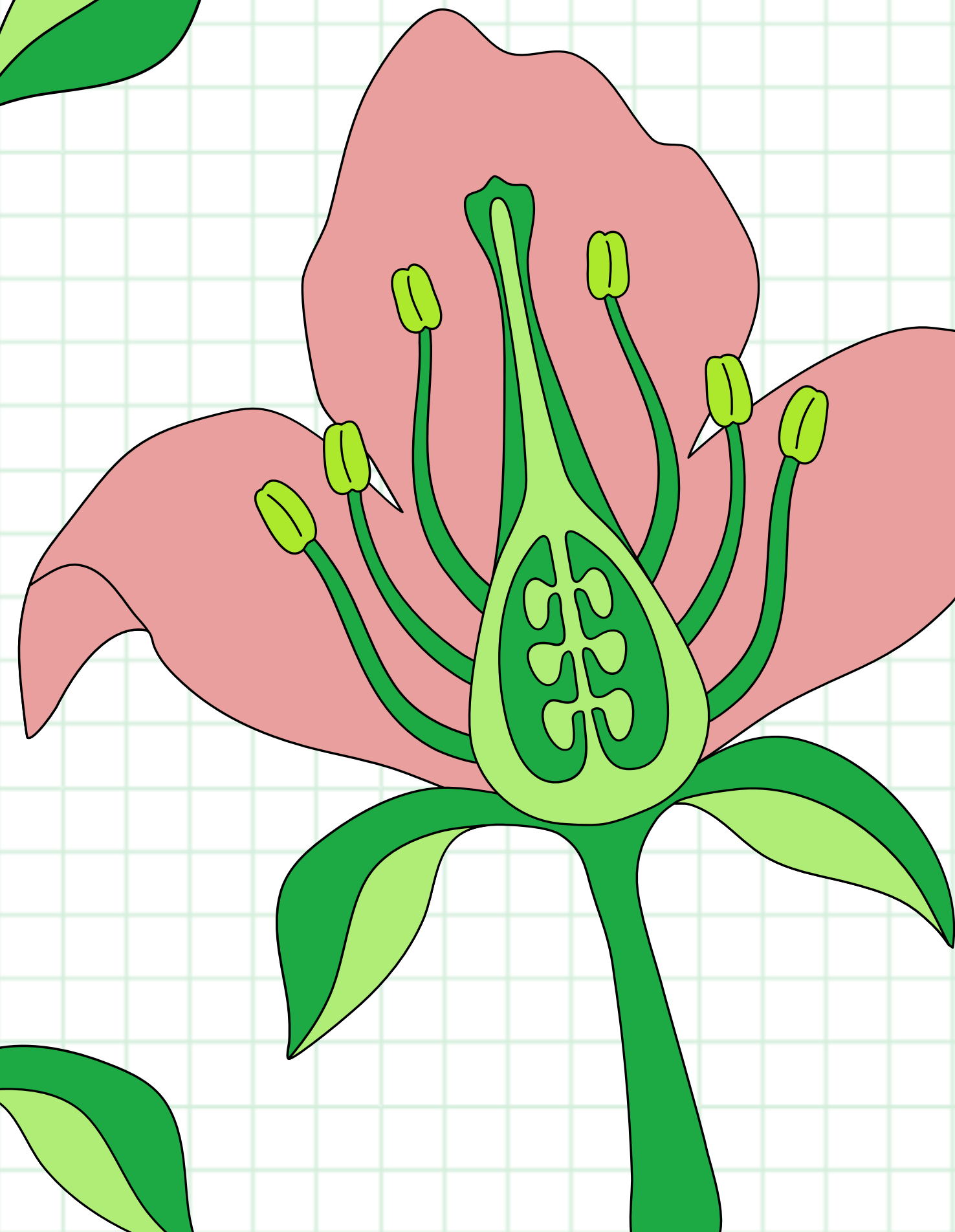


REGIONE AUTONOMA DE SARDIGNA
REGIONE AUTONOMA DELLA SARDEGNA

PRESENTADA

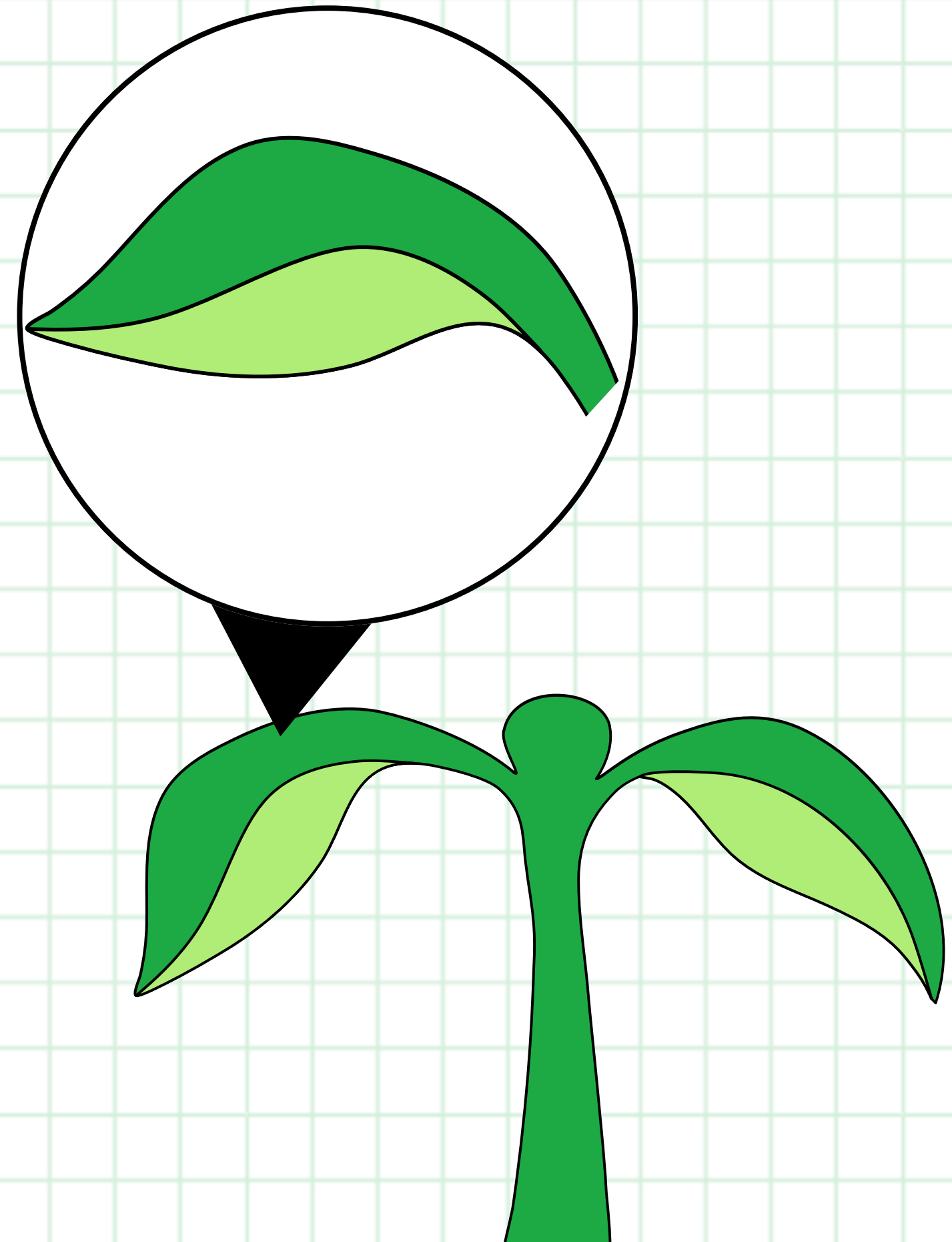
IS PARTIS DE SU FRORI

PROGETU FINANTZIAU CUN SU DINAI DE SA REGIONI AUTONOMA DE SARDIGNA
CUNFROMA A SA LEI 482/99 E A SA LR. 22/2018



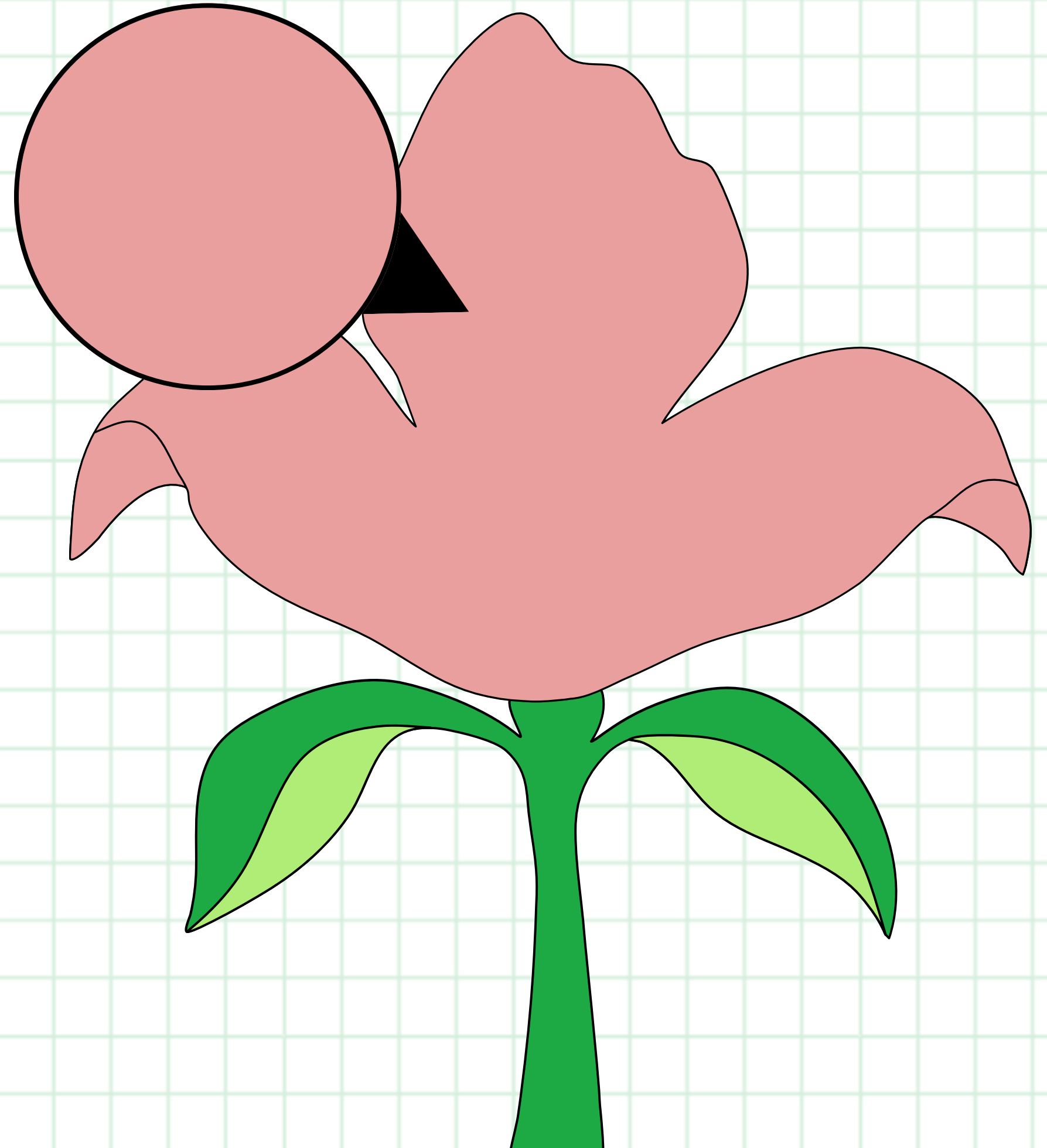
SÈPALU

Is sèpalus amparant su frori candu frorit.
Funt sa primu parti de su frori a nasci.



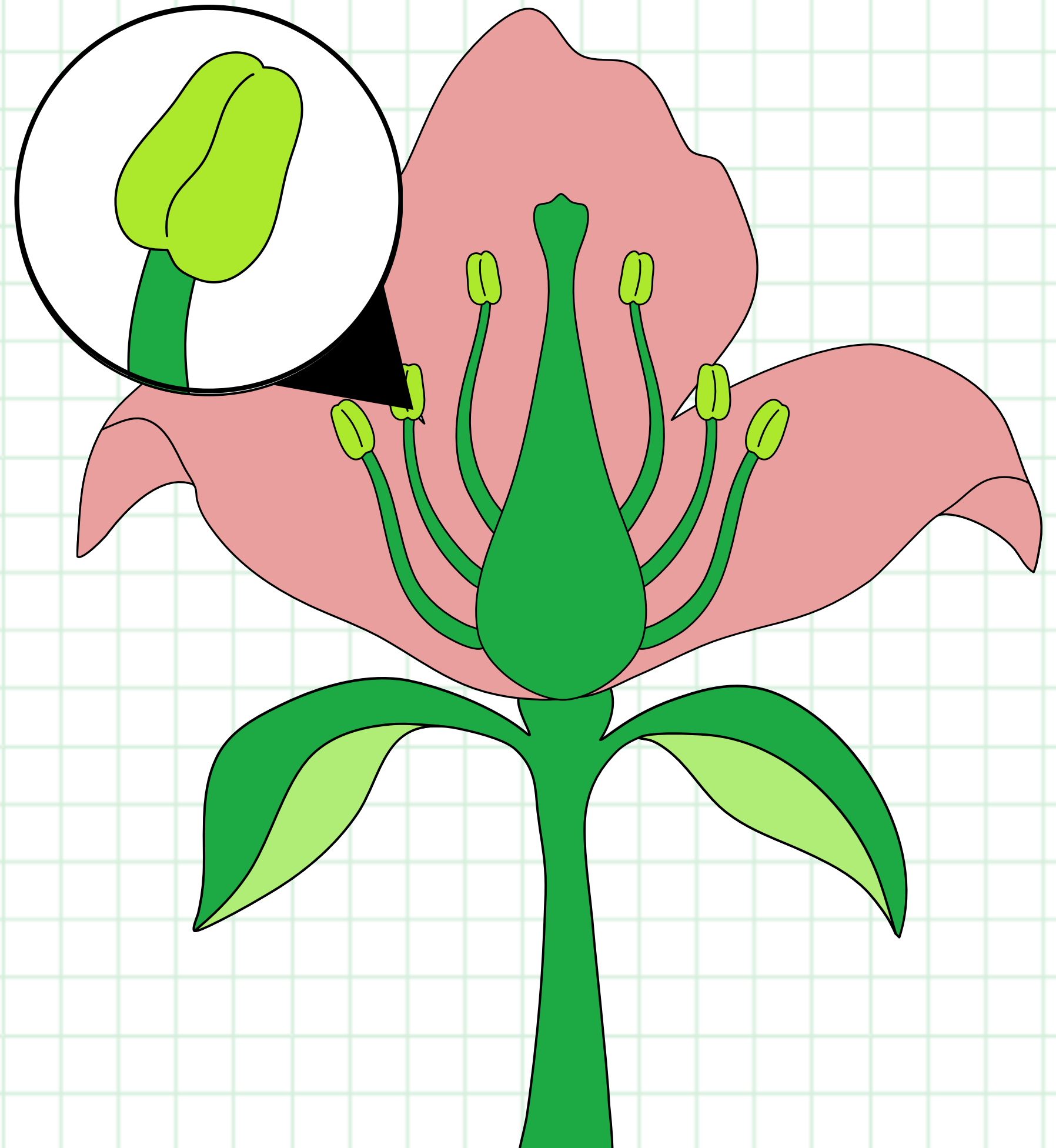
PÈTALUS

Is pètalus funt luxentis e bellus po fai acostai is baballotis ca pigant su pòddini e ddu portant a is àterus froris.



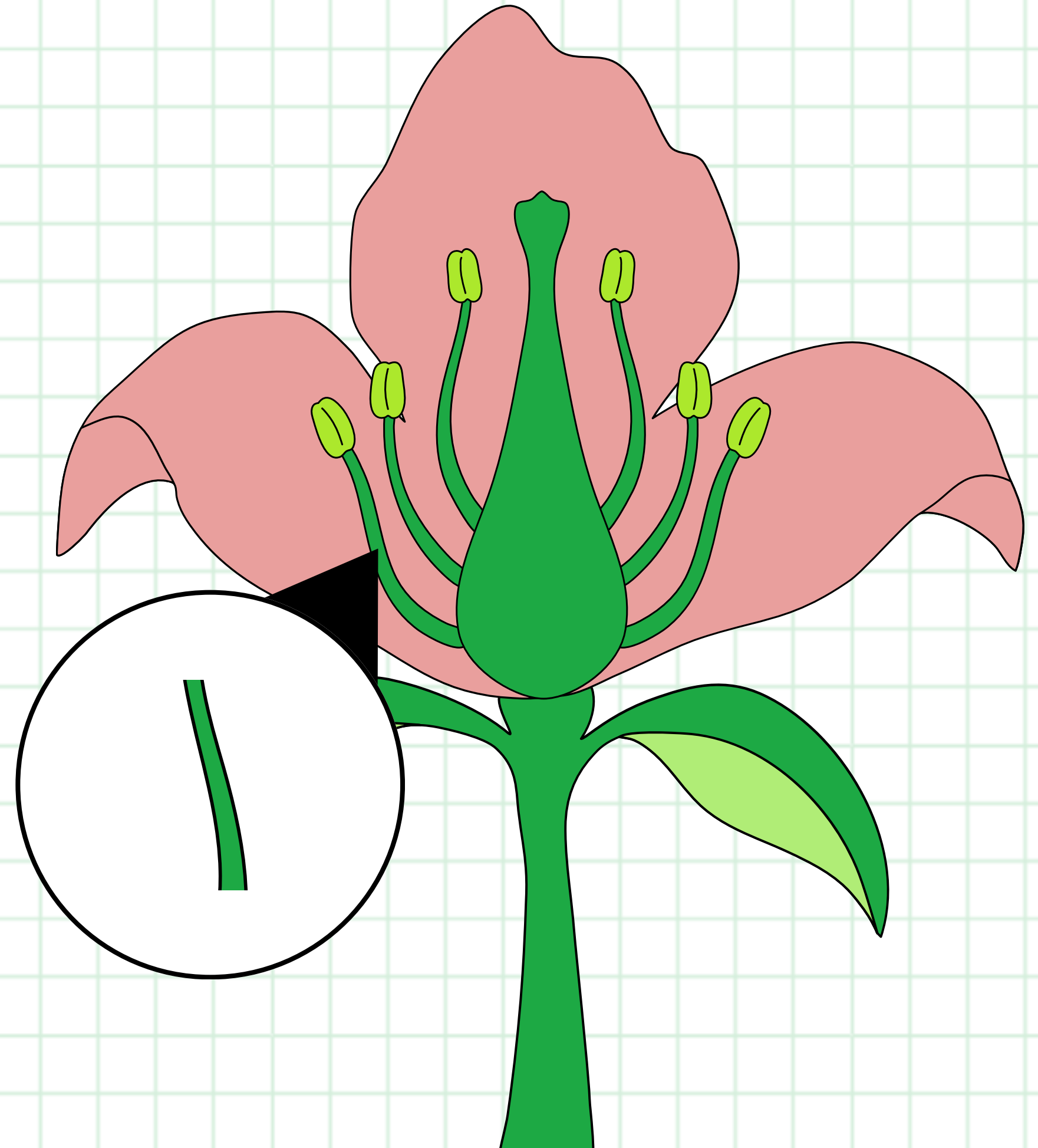
ANTERA

S'antera est una sachita chi s'agatat apitzus de su cùcuru de su filamentu. Est innoi chi nascit su pòddini.



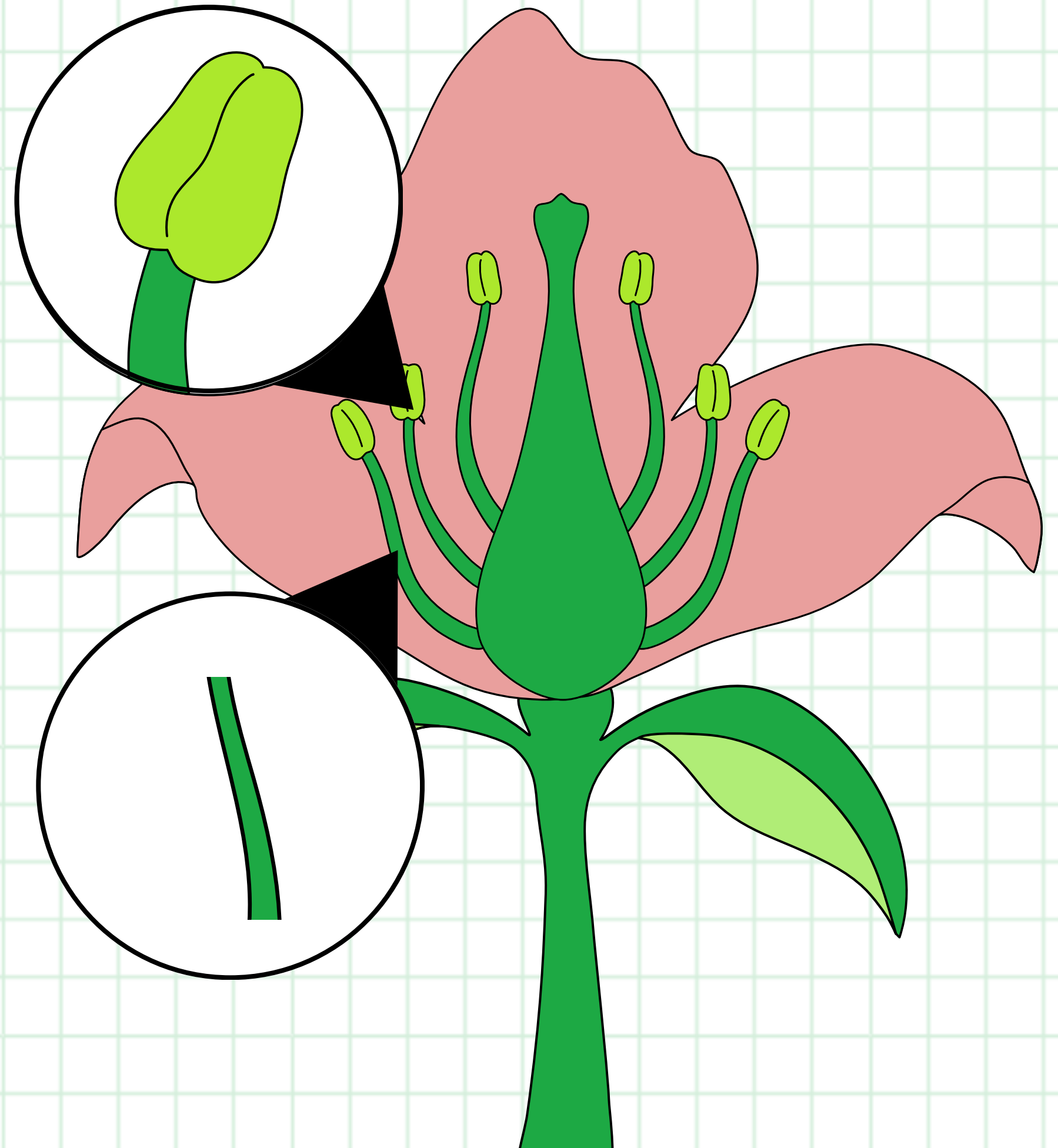
FILAMENTU

Su filamentu aguantat s'antera po fai a manera chi is baballotis potzant traballai.



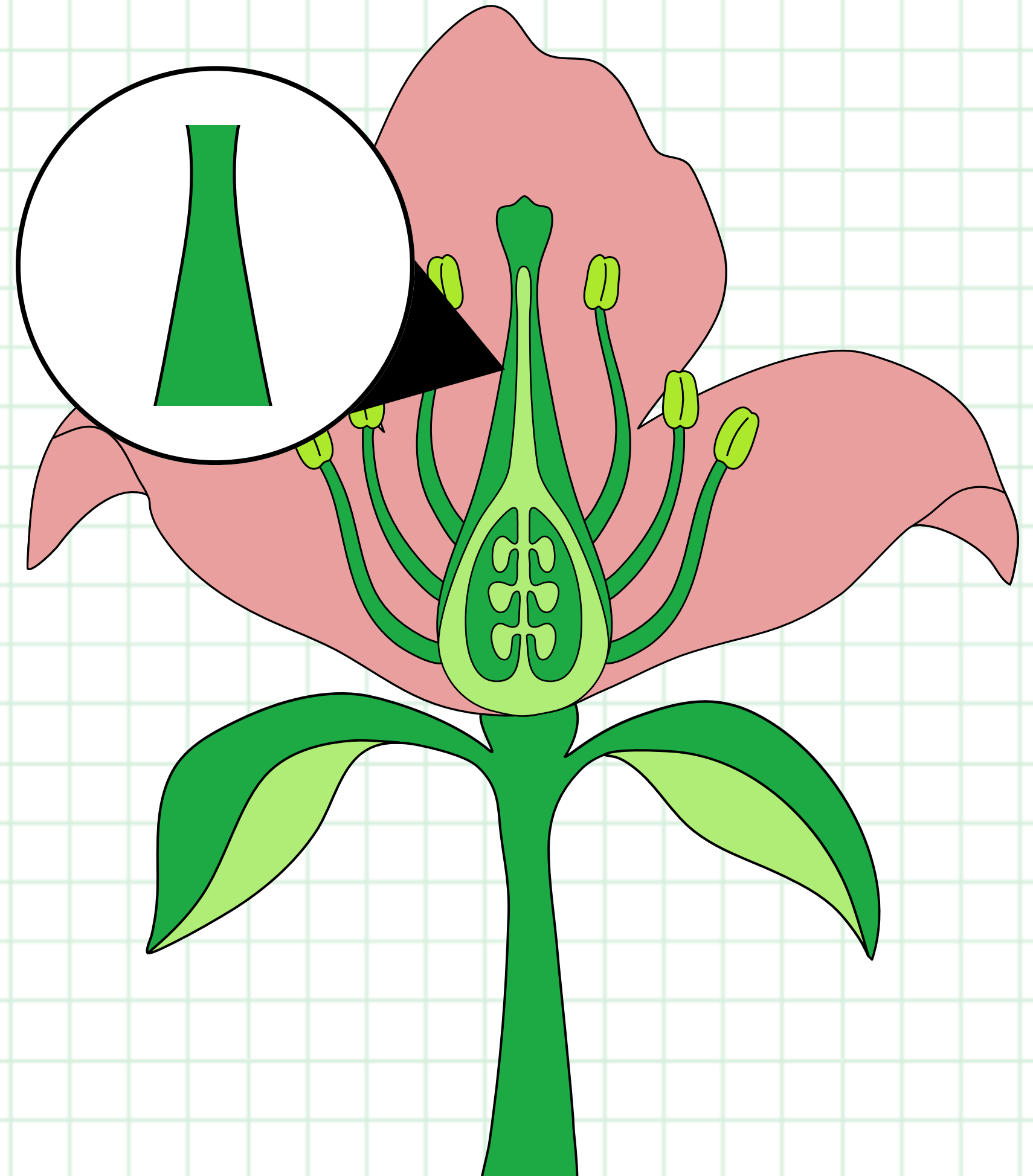
STÀMINIS

Funt s'òrganu po si riprodusi de is
mascus



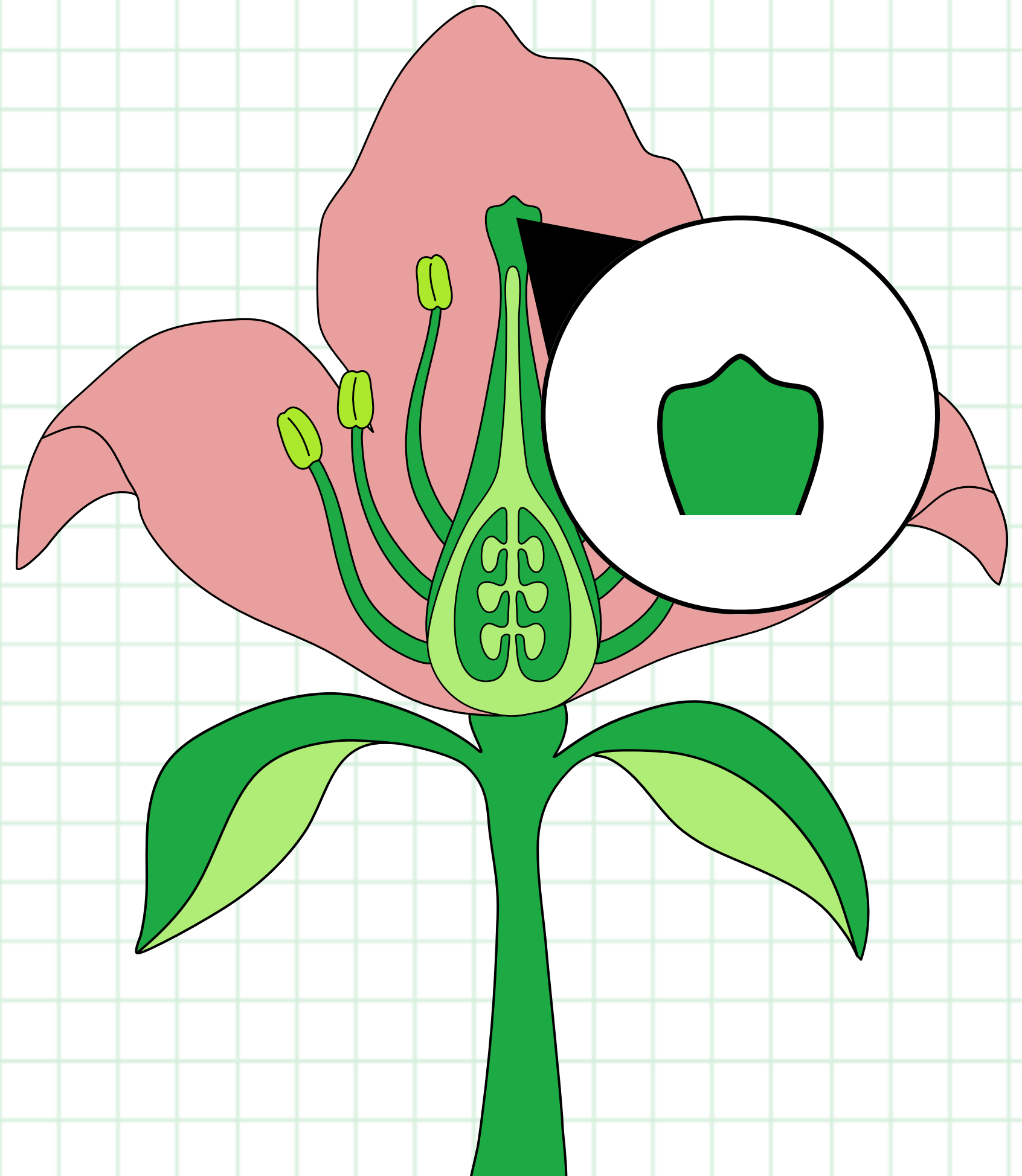
PISTILLU

Est una structura a tubu chi sustentat su stigma.



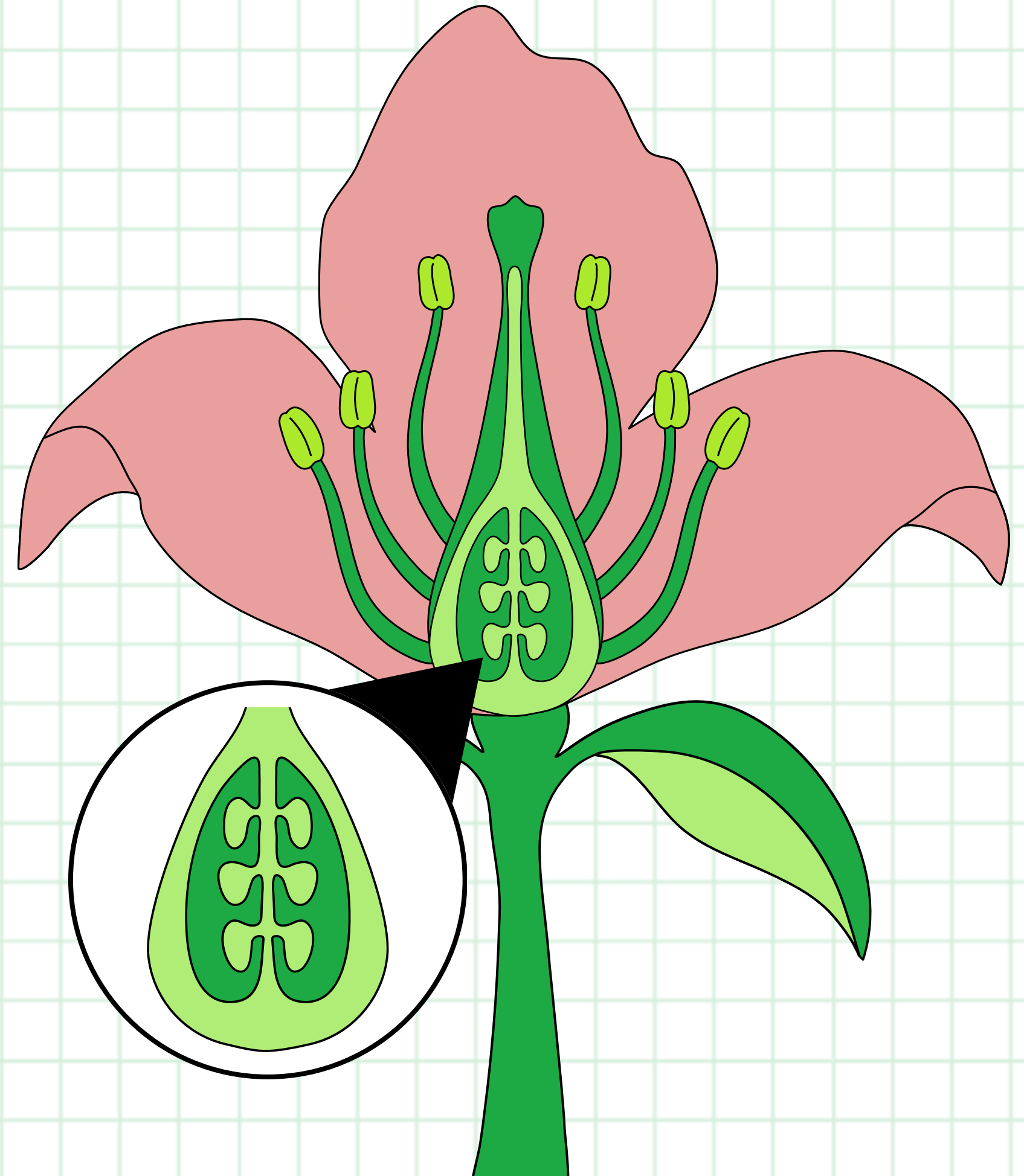
STIGMA

Su stigma tenit unu pillu apicigosu.
Est innoi chi est cassau su pòddini.



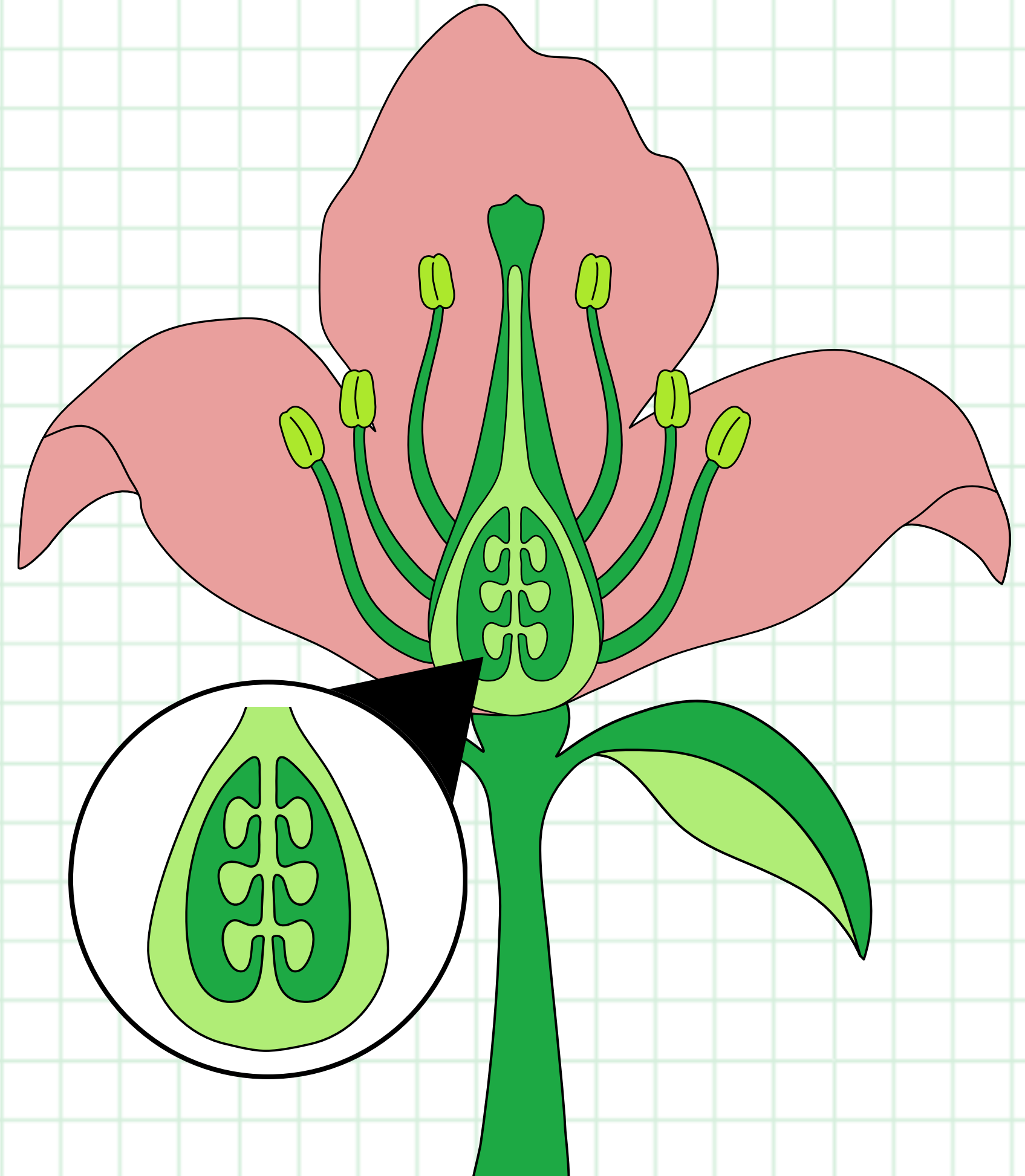
OVÀRJU

S'ovàriu produsit e cuntenit is sèminis o òvulus ca funt crescendi.



ÒVULU

Est s'òrganu po si riprodusi de is fèminas



FINI

CUMENTI EST

FATU SU

FRORI

